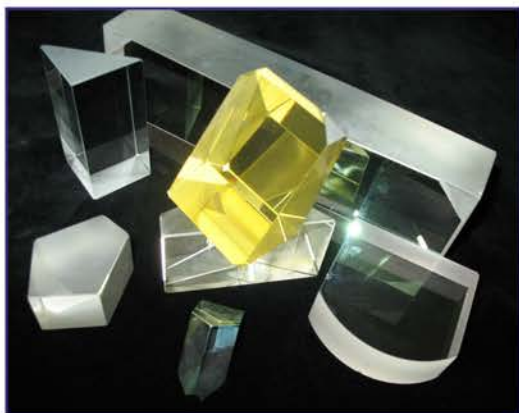
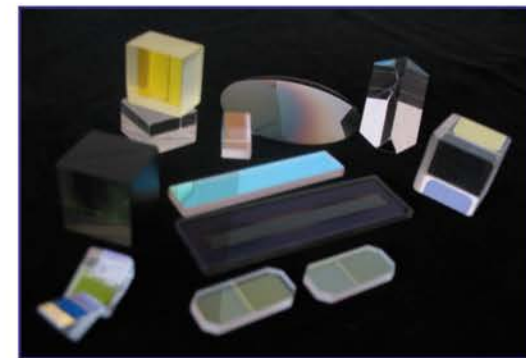


PRISMS

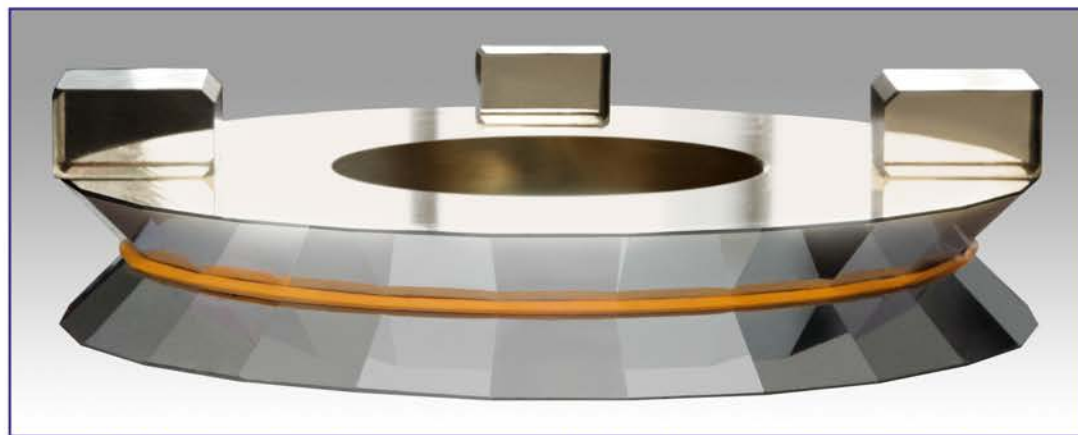
Prisms, wedges, plates made from different types of optical glass. Prism types: right-angle, skewed, pentaprisms, corner-cube prisms, etc.

SPECIFICATION:

Size by the largest edge, mm	≤ 300
Optical surface shape accuracy, ΔN	$\leq \lambda / 20$
Surface optical purity class, P	not worse than 0-10
Angular parameters accuracy	not worse than 1"



Spectrum dividing prisms



24-facet prism (two symmetrical prisms glued together)